

Caffeine in foods and its antimicrobial activity

¹Nonthakaew, A., ^{1*}Matan, Na., ¹Aewsiri, T. and ²Matan, Ni.

¹Food Science and Technology, School of Agricultural Technology, Walailak University,
80161, Nakhon Si Thammarat, Thailand

²School of Engineering and Resources, Walailak University, 80161, Nakhon Si
Thammarat, Thailand

Article history

Received: 1 January 2014

Received in revised form:

23 July 2014

Accepted: 27 July 2014

Abstract

Caffeine is a widely known food constituent. Coffee and tea are major sources of caffeine. However, there is little data about caffeine's antimicrobial activity. Although caffeine is safe for the consumer and suitable as an antimicrobial agent in food, ingesting a lot of caffeine will affect the body ($>400 \text{ mg day}^{-1}$). As a result, legislation has defined the amount of caffeine to be used in various food products. In term of antimicrobial activity, caffeine at concentration from 62.5 to $>2,000 \mu\text{g}\cdot\text{ml}^{-1}$ could inhibit bacteria. In addition, higher amount of caffeine ($>5,000 \mu\text{g}\cdot\text{ml}^{-1}$) was found to inhibit mold growth.

© All Rights Reserved

Keywords

Caffeine

Coffee

Tea

Food

Antimicrobial

Introduction

Natural coffee and tea contain some antimicrobial substances that could inhibit a variety of microorganism including pathogens (Pane *et al.*, 2012; Chen *et al.*, 2013). Caffeine was reported to inhibit mold (Suárez-Quiroz *et al.*, 2004) and bacteria (Sandlie *et al.*, 1980; Almeida *et al.*, 2012). Therefore, the objective of this paper is to review the antimicrobial activity of caffeine extracted from these plants.

Definition of caffeine

Caffeine (1,3,7-trimethylxanthine, $\text{C}_8\text{H}_{10}\text{N}_4\text{O}_2$) (Figure 1) is a natural alkaloid or xanthine alkaloid found in coffee beans, tea leaves, cocoa beans, cola nuts and other plants. It is one of the most widely used pharmacological substances in the world. Caffeine can be taken into the body by drinking coffee, tea, cocoa and cola and it is also used as component (Nawrot *et al.*, 2003).

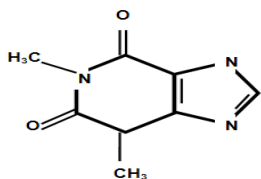


Figure 1. The chemical structure of caffeine

Natural sources of caffeine

Caffeine is a substance that can be found in various plants and beverages. Beverages such as coffee, tea, cocoa and soft drinks are the most produced from coffee and tea plants. Different caffeine concentrations in raw materials and food products are shown in Table 1.

Coffee

Coffee is the most importance source of caffeine (Minamisawa *et al.*, 2004). Caffeine in coffee depends on the extraction method and types of coffee include fresh or roasted beans. For instant, fresh and roasted green beans of the Arabica genus from Los Altos de Chiapas, Mexico contain 4.00 and $9.33 \text{ mg}\cdot\text{l}^{-1}$ of caffeine, respectively (Salinas-Vargas *et al.*, 2014). On the other hand, the amount of caffeine in Arabica fresh coffee was reported to be from 190 to $456 \text{ mg}\cdot\text{l}^{-1}$. Higher concentrations of caffeine in fresh coffee from 314 to $646 \text{ mg}\cdot\text{l}^{-1}$ were found when using Robusta (Rodrigues *et al.*, 2007).

Tea

Tea also provides a significant source of caffeine (Najafia *et al.*, 2003). Dried tea contains a higher composition of caffeine when compared to the coffee bean (Chu and Juneja, 1997). Unfortunately, the tea brewing method causes reduced caffeine. The caffeine content in tea is also related to the tea type

*Corresponding author.

Email: nmarumol@wu.ac.th

Table 1. Caffeine content

Products	Caffeine (mg·100g ⁻¹ food)	References			
Coffee	Instant	59	Burg, 1975		
		66	Gilbert et al.,1976		
		60	Lelo et al.,1986		
		71	Stavric et al.,1988		
		60	Barone and Roberts,1996		
		71	Nawrot et al., 2003		
		75	Knight et al., 2004		
		83	Burg, 1975		
		74	Gilbert et al.,1976		
		80	Lelo et al.,1986		
Roasted		82	Stavric et al.,1988		
		83	Nawrot et al., 2003		
		Tea	Leaf	41	Burg,1975
				30	Barone and Roberts, 1996
				8	Stavric et al.,1988
Instant		41	Nawrot et al., 2003		
		28	Burg, 1975		
		5	Barone and Roberts,1996		
		28	Nawrot et al., 2003		
Cocoa		28	Knight et al., 2004		
		5	Barone and Roberts,1996		
		4	Nawrot et al., 2003		
Chocolate		6	Knight, et al., 2004		
		20	Gilbert et al.,1976		
		20	Nawrot et al., 2003		

and the extraction method. For dried tea leaves, the caffeine content varies from 1.0% to 3.5% (Fernandez *et al.*, 2000). After brewing, caffeine in black tea (30.97 mg·g⁻¹) was found to be higher than green tea (18.70 mg·g⁻¹) and oolong tea (23.89 mg·g⁻¹) (Guo *et al.*, 2011).

Cocoa

Cocoa is a source of caffeine (DeVries *et al.*, 1981) and is the main ingredient to produce chocolate. Many reports (Zoumas *et al.*, 1980; Blauch and Tarke, 1983; Craig and Nguyen, 1984) explained that chocolate products with caffeine such as hot chocolate, chocolate milk and chocolate cake can help to improve alertness and mood when consumed in low doses (<32 mg) (Lieberman *et al.*, 1987). Depending on the plantation area, plant type and other factors, the caffeine content in cocoa powder was between 0.66 and 0.71 mg·g⁻¹ (Li *et al.*, 2012).

Chemical and physical properties

The chemical and physical properties of caffeine are shown in Table 2. Caffeine is an odorless white powder with a bitter taste. It has a density of 1.2 g·cm⁻³ and a neutral pH of 6.9. Solubility caffeine in water is about 21.7 mg·ml⁻¹ at 25°C, 180 mg·ml⁻¹ at 80°C and 670 mg·ml⁻¹ at 100°C. Its boiling point is at 178°C and its melting point is at 238°C.

Caffeine biosynthesis pathway

Caffeine biosynthesis in plants has been reported by Suzuki *et al.* (1992); Ashihara and Crozier (1999); Ashihara *et al.* (2008). The purine alkaloid metabolism is used for the biosynthesis of caffeine in plants. The caffeine biosynthesis pathway in

coffee beans, as shown in Figure 2 starts in the created substrate xanthosine which then changes to 7-methylxanthine by the methylxanthine synthase enzyme. Next, it changes into 7-methylxanthosine by the methylxanthosine nucleotidase enzyme and then changes into theobromine by the caffeine synthase enzyme. After that, theobromine changes into caffeine.

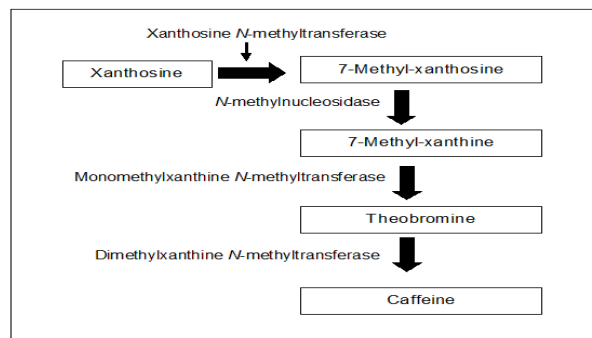


Figure 2. Caffeine biosynthetic pathway

Antimicrobial activity of caffeine in plant extract

In vitro and in vivo test

Caffeine has been reported to be an inhibitor of microorganism growth in various food crops and food products. The antimicrobial activity of caffeine in coffee and tea extracts is shown in Table 3. Extraction methods include microwave, ultrasonic, Soxhlet, heat reflux extraction and solvent soaking (Jun *et al.*, 2011). Although caffeine is one of the main components in coffee and tea extracts, minor components or caffeine derivatives such as xanthine have also been found (Sun *et al.*, 2006). Furthermore, various concentrations of theophylline and theobromine (a derivative of caffeine) as alkaloids caffeine were confirmed to be found in roasted coffee and the rough green beans in both Arabica and Robusta coffee (Huck *et al.*, 2005). Therefore, Antimicrobial activity with caffeine as the main component and their minor components has been demonstrated by literature reviews. Caffeine from *Coffea arabica* (coffee beans) and *Camellia sinensis* (green tea leaves) showed antibacterial activity against gram-positive bacteria e.g. *Staphylococcus aureus* and *Bacillus cereus* and also gram-negative bacteria e.g. *Escherichia coli*, *Proteus mirabilis*, and *Klebsiella pneumoniae*. The MIC values ranged from 62.5 to 250.0 µg·ml⁻¹ for the coffee caffeine and from 62.5 to 500.0 µg·ml⁻¹ for the green tea caffeine (Mohammed and Al-Bayati, 2009). Caffeine from tea (*Camellia sinensis*) can affect the mycelial growth, sporulation and spore germination of *Monascus purpureus* in media. In addition, concentrations of caffeine from 500 mg·l⁻¹ showed a reduction colony size and inhibition of both mycelial

Table 2. Physical and chemical properties of caffeine

Properties of caffeine ^(1,2)	Status
Molecular weight	194.191 g·mol ⁻¹
Physical characteristics	white powder, bitter taste and odorless
Density	1.2 g·cm ⁻³ (solid)
Boiling point	178°C (Sublimation)
Melting point	238°C (Anhydrous)
Water solubility	21.7 mg·ml ⁻¹ (25°C) 180 mg·ml ⁻¹ (80°C) 670 mg·ml ⁻¹ (100°C)

¹⁾ Florey, 1989; ²⁾ Agyemang-Yeboah and Oppong, 2013.

growth and spore germination of *Monacrosporium ambrosium* (Savitri Kumar et al., 1995). In 1995, Fardiaz demonstrated that, at concentrations from 2.5 to 10 g·100 ml⁻¹, caffeine from coffee extracts inhibited the growth of *Rhizopus oryzae* on plate count agar. Wilmot (2006) used caffeine from tea extracts to inhibit *Fusarium solani*, *Sclerotium rolfsii* and *Sclerotinia sclerotiorum* molds. Results showed that the mold growth percentage on cucumbers, tomatoes, and lettuce were reduced by 77%, 45%, and 50%, respectively. Chen et al. (2013) agreed with these results and found that the anti-fungal activity from green tea extracts was due to the caffeine.

Mode of action

Although caffeine from coffee and tea extracts has been recognized for its positive effect on human health, caffeine removal is being considered because of its negative effects. Some eukaryotic and prokaryotic microorganism cells can be degraded by caffeine (Gokulakrishnan et al., 2005). Therefore, only the minimum inhibitory concentration (MIC) value was reported from the literature review after using caffeine in coffee and tea extracts against microorganisms.

To explain the mode of action of caffeine against microorganisms, it has been found that caffeine can pass easily to the cell wall of the bacteria. Then, caffeine can begin to inhibit DNA synthesis. Lower DNA causes to lower activity in all bacteria cells. Therefore, enzyme synthesis and protein synthesis does not happen (Sundarraaj and Dhala, 1965). However, this inhibition process of caffeine in bacteria can be stopped when caffeine is converted into theobromine and para-xanthine by bacteria enzymes (demethylases) before going to oxidation process (Blecher and Lingens, 1977). In mold, caffeine can inhibit its spore germination (Kumar et al., 1995). Therefore, the lag phase of mold spore contamination is extended and is observed. Caffeine degradation of molds (*Aspergillus tamari*, *A. niger*, *A. fumigatus* and *P. commune*) is started when the nitrogen source is insufficient. *Aspergillus* sp. showed the most efficient caffeine degradation (92%) (Hakil et al., 1998). Furthermore, caffeine can inhibit aflatoxins from molds by stopping the synthesis of glucose, fructose, and maltose. These sugars are

Table 3. Antimicrobial activity of caffeine in plant extract

Plant	Microorganism	Concentration	Reference
Tea	<i>Monacrosporium ambrosium</i>	500 to 2,500 ppm	Kumar et al., 1995
	<i>Fusarium solani</i> , <i>Sclerotium rolfsii</i> , <i>Sclerotinia sclerotiorum</i>	100 to 200 g l ⁻¹	Wilmot, 2006
	<i>Mucor piriformis</i> , <i>Aspergillus niger</i> , <i>Alternaria alternata</i>	-	Taley et al., 2012
	<i>Candida albicans</i>	-	-
	<i>Staphylococcus aureus</i> , <i>Bacillus cereus</i> , <i>Escherichia coli</i> , <i>Proteus mirabilis</i> , <i>Klebsiella pneumonia</i>	62.5 to 500 µg ml ⁻¹	Mohammed and Al-Bayati, 2009
	<i>Salmonella typhimurium</i>	2.0 mg ml ⁻¹	Wu et al., 2007
	<i>Staphylococcus epidermidis</i>	0.156 to 0.313 mg ml ⁻¹	Sharma et al., 2012
	<i>Micrococcus luteus</i> , <i>Brevibacterium linens</i> , <i>Pseudomonas fluorescens</i> , <i>Bacillus subtilis</i>	-	-
	<i>Rhizopus oryzae</i>	10 g 100 ml ⁻¹	Fardiaz, 1995
	<i>Staphylococcus aureus</i> , <i>Bacillus cereus</i> , <i>Escherichia coli</i> , <i>Proteus mirabilis</i> , <i>Klebsiella pneumonia</i>	62.5 to 250 µg ml ⁻¹	Mohammed and Al-Bayati, 2009
	<i>Aspergillus tamari</i> , <i>Aspergillus fumigatus</i> , <i>Aspergillus niger</i>	-	Hakil et al., 1998
	<i>Penicillium commune</i> , <i>Aspergillus flavus</i>	-	Buchanan and Lewis, 1984
	<i>Streptococcus mutans</i>	2.0 mg ml ⁻¹	Antonio et al., 2010; Almeida et al., 2012
	<i>Colletotrichum kahawae</i>	20 %wv ⁻¹	Abera et al., 2011

substrate for aflatoxin produce of mold (Buchanan et al., 1983; Hasan, 1999; Aneja and Gianfagna, 2001; Holmes et al., 2008).

Application of coffee and tea extracts in food

In the last decade, coffee and tea extracts have been researched to find ways to be applied in food products. Fresh coffee is very well known and popular - people around the world drink approximately 2.25 billion cups of coffee per day (Dicum and Luttinger, 1999). The tea market is also very big, especially in Asia. The popularity of tea in some countries has increased by more than 500% in the last ten years (New Products Trends, 2013). Of course, consumers know about caffeine in their coffee and tea. The debate regarding the impact of caffeine on human health in dietary items has been discussed and caffeine consumption levels have been set. For example, the amount of caffeine taken per day for pregnant women should be less than 300 mg. For children, intake should be below 2.5 mg·kg⁻¹ (Nawrot et al., 2003). For normal adults though, levels are difficult to set.

The application of coffee and tea extracts against microorganisms continues to be looked at. For example, if there is a *Vibrio parahaemolyticus* contamination, a treatment of green tea extract could be applied to extend the shelf life of Pacific oysters (*Crassostrea gigas*) at the oyster per tea extract ratio of approximately 0.7 g·ml⁻¹ during refrigeration storage (Xi et al., 2012). Also, the use of an edible film produced from tapioca starch with green tea extract can possibly reduce gram positive bacteria (e.g. *L. monocytogenes*, *B. cereus* and *S. aureus*),

Table 4. List of some foods with caffeine

Food	Caffeine (mg·250 ml ⁻¹ ·g ⁻¹)	References
Espresso coffee (black coffee)	380-895	Desbrow <i>et al.</i> , 2012
Coffee-flavored milk	26-71	Desbrow <i>et al.</i> , 2012
Cappuccino or Latte	45-75	Health Canada, 2013
Iced tea	9-50	Knight <i>et al.</i> , 2004
Black tea	28-46	Bunker and McWilliams, 1979
Green tea	24.8	Mitchell <i>et al.</i> , 2014
White tea	15.2	Mitchell <i>et al.</i> , 2014
Lemon tea	31	Health Canada, 2013
Cocoa beverage	6	Knight <i>et al.</i> , 2004
Milk chocolate	54	Barone and Roberts, 1996
Baking chocolate	312	Barone and Roberts, 1996
Sweet chocolate	179	Zoumas <i>et al.</i> , 1980
Pepsi Cola	20	Chou, 1992

mold growth and yeast on fruit-based salads, romaine hearts, and pork slices by 1-2 log cycles (Chiu and Lai, 2010). And bioactive film incorporated with green tea extract and *Lactobacillus paracasei* L26, and *Bifidobacterium lactis* B94 were applied on hake fillets in order to evaluate the effect of the films during 15 days of storage. Results demonstrated that films with green tea and probiotics were able to extend the shelf life of hake for at least a week (Lacey *et al.*, 2014).

There are various food products based on coffee extract such as coffee cake, coffee-flavored milk. In Australia, espresso coffee and coffee-flavored milk were analyzed for their caffeine content. The concentration of caffeine from espresso coffee and coffee-flavored milk were $2,550 \pm 1,030$ mg·l⁻¹ and 193 ± 90 mg·l⁻¹, respectively (Desbrow *et al.* 2012). For more about caffeine content in other food products is shown in Table 4. Table 3 and Table 4 indicate that consumption of food products containing caffeine may help to decrease a number of pathogenic microorganisms. However, more works on human laboratory test need to be performed.

Caffeine and food laws

According to some effects of caffeine on human behavior, food laws about caffeine are now being discussed for the safety of consumers. Nawrot *et al.* (2003) indicated that for the healthy adult, consumption of caffeine at a dose up to 400 mg a day does not affect general toxicity, cardiovascular effects, bone status and calcium balance. However, consumption of less than 300 mg per day is advised for woman and children. The caffeine limits for food products in various countries are found. In Thailand, the amount of caffeine in coffee is limited to less than 1000 mg·l⁻¹. However, there is no control of the caffeine limit in tea and tea products in Thailand (Thai Government Gazette, 2002a,b). In comparison with the EU food

standards, Australia and New Zealand and Canada lower concentration (<150 mg·l⁻¹, 320 mg·l⁻¹, 400 mg·l⁻¹ respectively) of caffeine is allowed in coffee and tea (Commission of the European Communities, 2002; Food Standards Australia New Zealand, 2013; Health Canada, 2013). On the other hand, no specific recommendations for caffeine intakes in the U.S., the FDA released a letter in August 2012 stating that for healthy adults, caffeine intake up to 400 mg·day⁻¹ is not associated with adverse health effects (USFDA, 2012). Caffeine can be found naturally in more than 60 species of plants, especially in coffee and tea. It can be used to inhibit bacteria, yeast and mold growth. Food products around the world containing caffeine are accepted by consumers and business is increasing. However, various food law standards from various countries are used to control caffeine in food products.

Acknowledgements

The authors gratefully acknowledge support from a research grant provided by the Office of the Higher Education Commission. Thailand, and the Walailak University fund (Contact No. WU 55608).

References

- Abera, A., Lemessa, F. and Muleta, D. 2011. The antifungal activity of some medicinal plants against coffee berry disease caused by *Colletotrichum kahawae*. International Journal of Agricultural Research 6 (3): 268-279.
- Agyemang-Yeboah, F. and Oppong, S. Y. 2013. Caffeine: The wonder compound, chemistry and properties. Ghana: Kwame Nkrumah University, MSc thesis.
- Almeida, A. A. P., Naghetini, C. C., Santos, V. R., Antonio, A. G., Farah, A. and Glória, M. B. A. G. 2012. Influence of natural coffee compounds, coffee extracts and increased levels of caffeine on the inhibition of *Streptococcus mutans*. Food Research International 49 (1): 459-461.
- Aneja, M. and Gianfagna, T. 2001. Induction and accumulation of caffeine in young, actively growing leaves of cocoa (*Theobroma cacao* L.) by wounding or infection with *Crinipellis perniciososa*. Physiological and Molecular Plant Pathology 59: 13-16.
- Antonio, A. G., Moraes, R. S., Perrone, D., Maia, L. C., Santos, K. R. N., Irio, N. L. P. and Farah, A. 2010. Species, roasting degree and decaffeination influence the antibacterial activity of coffee against *Streptococcus mutans*. Food Chemistry 118: 782-788.
- Ashihara, H. and Crozier, A. 2001. Caffeine: a well known but little mentioned compound in plant science. Trends in Plant Science 6 (9): 407-413.
- Ashihara, H., Sano, H. and Crozier, A. 2008. Caffeine and related purine alkaloids: Biosynthesis, catabolism,

- function and genetic engineering. *Phytochemistry* 69: 841-856.
- Barone, J.J. and Roberts, H.R. 1996. Caffeine consumption. *Food and Chemical Toxicology* 34: 119-129.
- Blauch, J. L. and Tarka, S. M. 1983. HPLC determination of caffeine and theobromine in coffee, tea, and instant hot cocoa mixes. *Journal of Food Science* 48: 745-747.
- Blecher, R. and Lingens, F. 1977. Metabolism of caffeine by *Pseudomonas putida*. *Hoppe Seyler Z Physiol Chem* 358: 807-817.
- Buchanan, R. L. and Lewis, D. F. 1984. Caffeine inhibition of aflatoxin synthesis: probable site of action. *Applied and environmental microbiology* 47 (6): 1216-1220.
- Buchanan, R. L., Hoover, D. G. and Jones, S. B. 1983. Caffeine inhibition of aflatoxin production: mode of action. *Applied and Environmental Microbiology* 46 (5): 1193-1200.
- Bunker, M.L. and McWilliams, M. 1979. Caffeine content of common beverages. *Journal of the American Dietetic Association* 74 (1): 28-32.
- Burg A. W. 1975. Effects of caffeine on the human system. *Tea Coffee Trade Journal* 147: 40-42.
- Chen, J., Zhang, S. and Yang, X. 2013. Control of brown rot on nectarines by tea polyphenol combined with tea saponin. *Crop Protection* 45: 29-35.
- Chiu, P.-E. and Lai, L.-S. 2010. Antimicrobial activities of tapioca starch/decolorized hsian-tsoa leaf gum coatings containing green tea extracts in fruit-based salads, romaine hearts and pork slices. *International Journal of Food Microbiology* 139 (1-2): 23-30.
- Chou, T. 1992. Wake up and smell the coffee: Caffeine, coffee and medical consequences. *Western Journal of Medicine* 157: 544-553.
- Chu, D.C. and Juneja, L.R. 1997. General chemical composition of green tea and its infusion. In Yamamoto, T., Juneja, L.R., Chu, D.C., Kim, M. (Eds). *Chemistry and Applications of Green Tea*, p.13-22.
- Commission of the European Communities. 2002. Commission Directive 2002/67/EC of 18 July 2002 on the labelling of foodstuffs containing quinine, and of foodstuffs containing caffeine. *Official Journal of the European Communities*, L191/20.
- Craig, W. J. and Nguyen, T. T. 1984. Caffeine and theobromine levels in cocoa and carob products. *Journal of Food Science* 49: 302-303.
- Desbrow, B., Henry, M. and Scheelings, P. 2012. An examination of consumer exposure to caffeine from commercial coffee and coffee-flavoured milk. *Journal of Food Composition and Analysis* 28 (2): 114-118.
- DeVries, J. W., Johnson, K. D. and Heroff, J. C. 1981. HPLC determination of caffeine and theobromine content of various natural and red dutch cocoas. *Hoppe Seyler's Z Physiol Chem* 358: 807-817.
- Dicum, G. and Luttinger N. 1999. *The coffee book: anatomy of an industry from the crop to the last drop*. The New Press : New York.
- Fardiaz, S. 1995. Antimicrobial Activity of Coffee (*Coffea robusta*) extract. *ASEA Food Journal* 10 (3): 103-106.
- Fernandez, P. L., Martin, M. J., Gonzalez, A. G. and Pablos, F. 2000. HPLC determination of catechins and caffeine in tea. Differentiation of green, black and instant teas. *Analyst* 125: 421-425.
- Florey, K. 1986. Analytical profiles of drug substances. Al-Badr, A.A., Brewer, A.G., Brenner, S.G., Deangelis, J.N. and Mollica, A.J. (Eds). *Analytical profiles of drug substances*, p. 71. London: Academic Press.
- FSANZ, Food Standards Australia New Zealand. 2013. The regulation of caffeine in foods. *Food Regulation Policy Options Paper*. FRSC Caffeine Working Group, August 2013.
- Gilbert, R.M., Marshman, J.A., Schwieder, M. and Berg, R. 1976. Caffeine content of beverages as consumed. *Canadian Medical Association Journal* 7: 205-208.
- Gokulakrishnan, S., Chandraraj, K. and Gummadi, S. N. 2005. Microbial and enzymatic methods for the removal of caffeine. *Enzyme and Microbial Technology* 37 (2):225-232.
- Guo, S., Zhu, Q., Yang, B., Wang, J. and Ye, B. 2011. Determination of caffeine content in tea based on poly(safranin T) electro active film modified electrode. *Food Chemistry* 129 (3): 1311-1314.
- Hakil, M., Denis, S., González, G. V. and Augur, C. 1998. Degradation and product analysis of caffeine and related dimethyl xanthines by filamentous fungi. *Enzyme and Microbial Technology* 22: 355-359.
- Hasan, H.A.H. 1999. Role of caffeine and tannin in anti-toxicogenic properties of coffee and tea. *Cryptogamie Mycologie* 20:17-21.
- Health Canada. 2013. Summary of comments on Health Canada's proposed approach to managing caffeinated energy drinks. Downloaded from <http://www.hc-sc.gc.ca/fn-an/legislation> on 12/12/2013.
- Holmes, R. A., Boston, R. S. and Payne, G. A. 2008. Diverse inhibitors of aflatoxin biosynthesis. *Applied Microbiology and Biotechnology* 78: 559-572.
- Huck, C.W., Guggenbichler, W. and Bonn, G.K. 2005. Analysis of caffeine, theobromine and theophylline in coffee by near infrared spectroscopy (NIRS) compared to high-performance liquid chromatography (HPLC) coupled to mass spectrometry. *Analytica Chimica Acta* 538 (1-2): 195-203.
- Jun, X., Deji, S., Ye, L. and Rui, Z. 2011. Comparison of *in vitro* antioxidant activities and bioactive components of green tea extracts by different extraction methods. *International Journal of Pharmaceutics* 408 (1-2): 97-101.
- Knight, C.A., Knight, I., Mitchell, D.C. and Zepp, J.E. 2004. Beverage caffeine intake in US consumers and subpopulations of interest: Estimates from the share of intake panel survey. *Food and Chemical Toxicology* 42 (12):1923-1930.
- Kumar, N. S., Hewavitharanage, P. and Adikaram, N. K. B. 1995. Attack on tea by *Xyleborus fornicatus*: Inhibition of the symbiote, *Monacrosporium ambrosium*, by caffeine. *Phytochemistry* 40(4): 1113-1116.
- Lacey, A. M. L. D., López-Caballero, M. E. and Montero, P. 2014. Agar films containing green tea extract and probiotic bacteria for extending fish shelf-life. *LWT - Food Science and Technology* 55 (2): 559-564.

- Lelo, A., Miners, J.O., Robson, R. and Birkett, D.J. 1986. Assessment of caffeine exposure: caffeine content of beverages, caffeine intake and plasma concentrations of methylxanthines. *Clinical Pharmacology and Therapeutics* 39: 54-59.
- Li, Y., Feng, Y., Zhu, S., Luo, C., Ma, J. and Zhong, F. 2012. The effect of alkalization on the bioactive and flavor related components in commercial cocoa powder. *Journal of Food Composition and Analysis* 25 (1): 17-23.
- Lieberman, H.R., Wurtman, R.J., Emde, G.G., Roberts, C. and Coviella, I.L. 1987. The effects of low doses of caffeine on human performance and mood. *Psychopharmacology (Berl)* 92 (3): 308-312.
- Minamisawa, M., Yoshida, S. and Takai, N. 2004. Determination of biologically active substances in roasted coffees using a diode-array HPLC system. *Analytical Science* 20: 325-328.
- Mitchell, D. C., Knight, C. A., Hockenberry, J., Teplansky, R. and Hartman, T. J. 2014. Beverage caffeine intakes in the U.S. *Food and Chemical Toxicology* 63: 136-142.
- Mohammed, M.J. and Al-Bayati, F.A. 2009. Isolation, identification and purification of caffeine from *Coffea Arabica* L. and *Camellia sinensis* L.: A combination antibacterial study. *International Journal of Green Pharmacy* 3 (1): 52-57.
- Najafi, N. M., Hamid, A. S. and Afshin, R. K. 2004. Determination of caffeine in black tea leaves by fourier transform infrared spectrometry using multiple linear regression. *Microchemical Journal* 75: 151-158.
- Nawrot, P., Jprdan, S., Eastwood, J., Rotstein, J., Hugenholtz, A. and Feeley, M. 2003. Effects of caffeine on human health. *Food Additives and Contaminants* 20 (1): 1-30.
- New Products Trends Prepared foods 2004. "Tea time" to last for many years. Downloaded from www.PreparedFoods.com on 8/12/ 2013.
- Pane, C., Celano, G., Vilecco, D. and Zaccardelli, M. 2012. Control of *Botrytis cinerea*, *Alternaria alternata* and *Pyrenochaeta lycopersici* on tomato with whey compost-tea applications. *Crop Protection* 38: 80-86.
- Rodrigues, C. I., Marta, L., Maia, R., Miranda, M., Ribeirinho, M. and Máguas, C. 2007. Application of solid-phase extraction to brewed coffee caffeine and organic acid determination by UV/HPLC. *Journal of Food Composition and Analysis* 20 (5): 440-448.
- Salinas-Vargas, M. E. and Cañizares-Macias, M. P. 2014. On-line solid-phase extraction using a C18 minicolumn coupled to a flow injection system for determination of caffeine in green and roasted coffee beans. *Food Chemistry* 147: 182-188.
- Sandlie, I., Solberg, K. and Kleppe, K. 1980. The effect of caffeine on cell growth and metabolism of thymidine in *Escherichia coli*. *Mutation Research/Fundamental and Molecular Mechanisms of Mutagenesis* 73 (1): 29-41.
- Savitri Kumar, N., Hewavitharanage, P. and Adikaram, N.K.B. 1995. Attack on tea by *Xyleborus fornicatus*: Inhibition of the symbiote, *Monacrosporium ambrosium* by caffeine. *Phytochemistry* 40 (4): 1113-1116.
- Sharma, A., Gupta, S., Sarethy, I. P., Dang, S. and Gabrani, R. 2012. Green tea extract: Possible mechanism and antibacterial activity on skin pathogens. *Food Chemistry* 135: 672-675.
- Stavric, B., Klassen, R., Watkinson, B., Karpinski, K., Stapley, R. and Fried, P. 1988. Variability in caffeine consumption from coffee and tea: possible significance for epidemiological studies. *Food and Chemical Toxicology* 26: 111-118.
- Suárez-Quiroz, M. L., González-Rios, O., Barel, M., Guyot, B., Schorr-Galindo, S. and Guiraud, J. P. 2004. Effect of chemical and environmental factors on *Aspergillus ochraceus* growth and toxigenesis in green coffee. *Food Microbiology* 21 (6): 629-634.
- Sun, H.-W., Qiao, F.-X. and Liu, G.-Y. 2006. Characteristic of theophylline imprinted monolithic column and its application for determination of xanthine derivatives caffeine and theophylline in green tea. *Journal of Chromatography A* 1134 (1-2): 194-200.
- Sundarraj, C. V. and Dhala, S. 1965. Effect of naturally occurring xanthines on bacteria (I). Antimicrobial action and potentiating effect on antibiotic spectra. *Applied Microbiology* 13: 432-436.
- Suzuki, T., Ashihara, H. and Waller, G. R. 1992. Purine and purine alkaloid metabolism in *Camellia* and *Coffea* plants. *Phytochemistry* 31: 2575-2584.
- Taley, S. L., Pethe, A. S., Tawari, A. C. and Rothe, S. P. 2012. Antifungal activity of green tea leaves extracts. *World Journal of Science and Technology* 2 (6): 23-25.
- Thai Government Gazette. 2001a. Notification of the Ministry of Public Health No.196. B.E.2000 Re: Tea. Vol. 118, Special Part 6 Ngor, dated 24th January 2001. Thailand.
- Thai Government Gazette. 2001b. Notification of the Ministry of Public Health No.197. B.E.2000 Re: Coffee. Vol. 118, Special Part 6 Ngor, dated 24th January 2001. Thailand.
- U.S. Food and Drug Administration. 2012. Letter from Jeanne Ireland, Assistant Commissioner for Legislation, FDA, to Senator Richard J. Durbin (August 10, 2012).
- Wilmot, M. 2006. *In vitro* Inhibition of phytopathogenic fungi by , caffeine, tea catechins theanine, polyphenon g, black-, green- and rooibos tea extracts. Pretoria, South Africa: Pretoria University, MSc thesis.
- Wu, S.-C., Yen, G.-C., Wang, B.-S., Chiu, C.-K., Yen, W.-J., Chang, L.-W. and Duh, P.-D. 2007. Antimutagenic and antimicrobial activities of pu-erh tea. *LWT - Food Science and Technology* 40: 506-512.
- Xi, D., Liu, C. and Su, Y.-C. 2012. Effects of green tea extract on reducing *Vibrio parahaemolyticus* and increasing shelf life of oyster meats. *Food Control* 25 (1): 368-373.
- Zoumas B. L., Kreiser W. R. and Martin R. A. 1980. Theobromine and caffeine content of chocolate products. *Journal of Food Science* 45: 314-316.